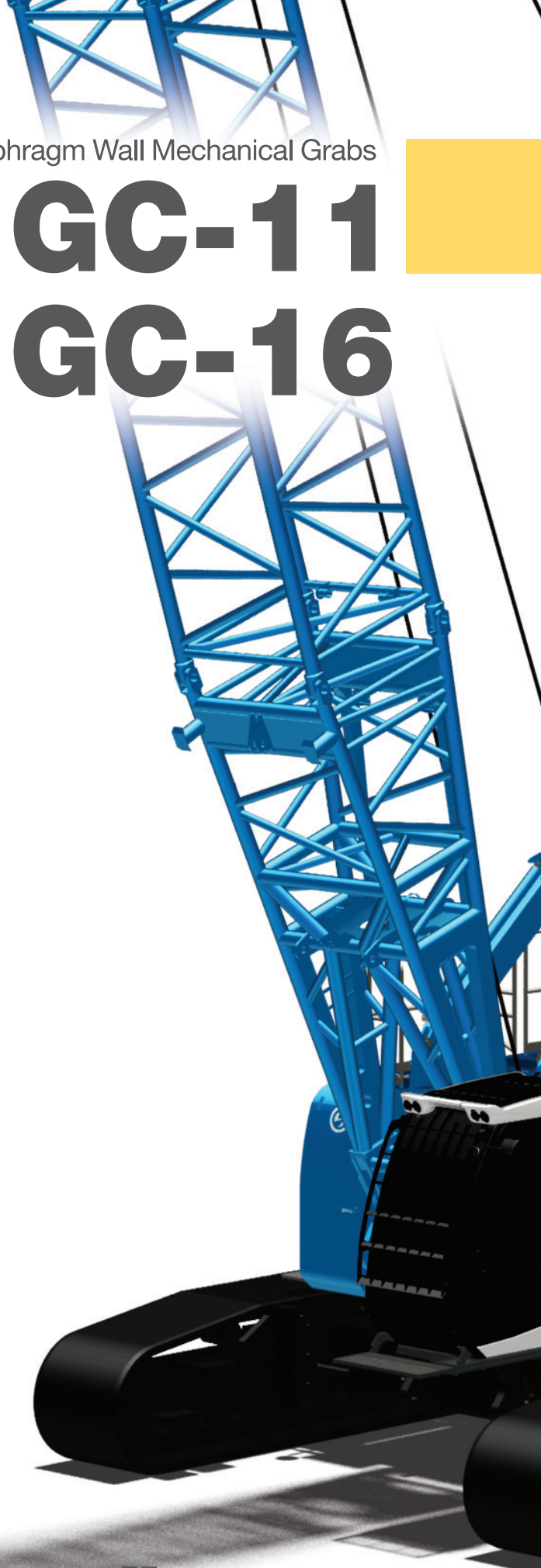


Diaphragm Wall Mechanical Grabs

# GC-11

# GC-16

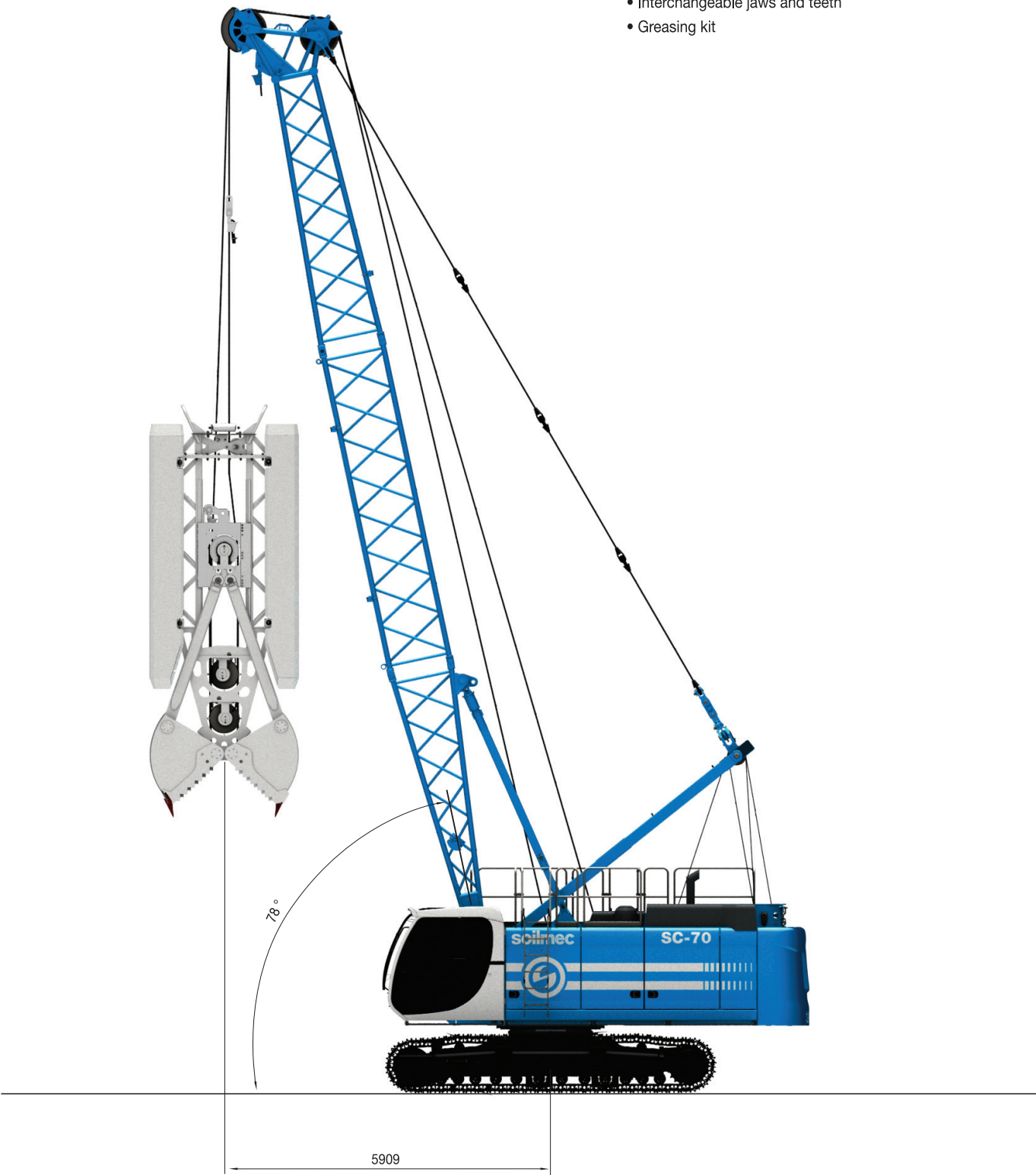


**soilmeco**  
Drilling and Foundation Equipment

# GC-11 Diaphragm Wall Mechanical Grab

## APPLICATION

- Inclinometer c/w watertight box
- Grab body extendable with 2850 mm additional side guides
- Interchangeable jaws and teeth
- Greasing kit

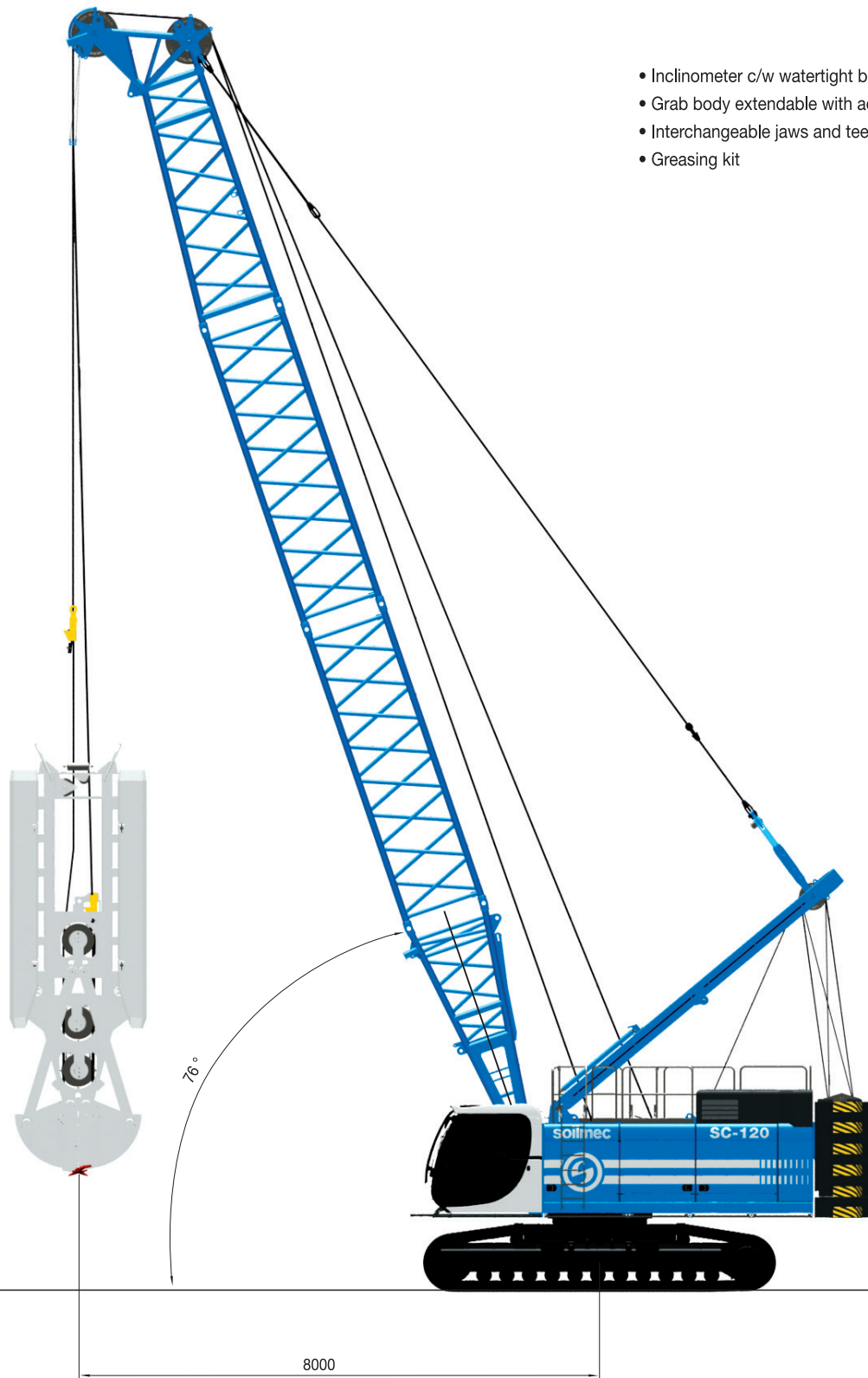


| GC-11 Cable operated grab suspended by rope |                         |                     |
|---|-------------------------|---------------------|
| Weight                                      | 11 - 15 t               | 12.5 - 16.5 ton     |
| Max depth                                   | Depending on cranes     | Depending on cranes |
| Excavation dimension                        | 600/1200 x 2500/3000 mm | 25/47 x 98.5/118 in |
| Max grab capacity                           | 2,1 m³                  | 74.2 ft³            |
| Rope diameter                               | 30 mm                   | 1.2 in              |
| Rope lines nos.                             | 5                       | 5                   |

# GC-16 Diaphragm Wall Mechanical Grab

## APPLICATION

- Inclinometer c/w watertight box
- Grab body extendable with additional side guides
- Interchangeable jaws and teeth
- Greasing kit

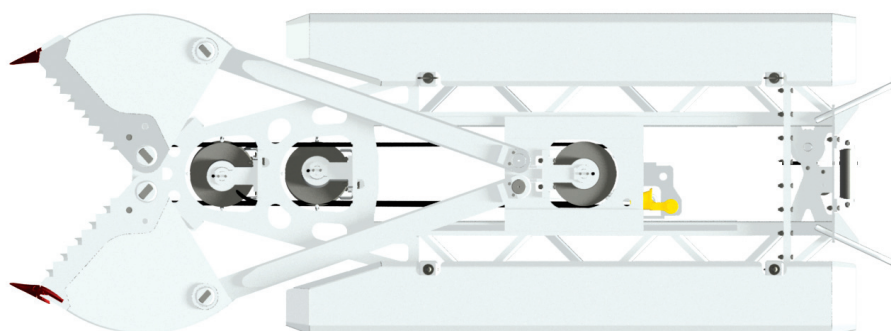


### GC-16 Cable operated grab suspended by rope

|                      |                         |                      |
|----------------------|-------------------------|----------------------|
| Weight               | 16 - 22 t               | 17.6 - 24 ton        |
| Max depth            | Depending on cranes     | Depending on cranes  |
| Excavation dimension | 800/1200 x 2800/3500 mm | 31.5/47 x 110/138 in |
| Max grab capacity    | 2,6 m <sup>3</sup>      | 91.8 ft <sup>3</sup> |
| Rope diameter        | 34 mm                   | 1.3 in               |
| Rope lines nos.      | 5                       | 5                    |

## GC-11 / GC-16 Diaphragm Wall Mechanical Grab

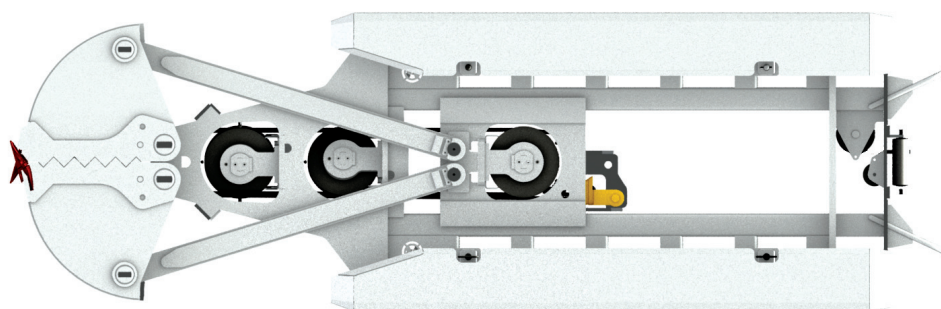
### TRANSPORT DIMENSIONS AND WEIGHTS



**GC-11** Weight c/w 1000 x 2800 jaws

**12,7 ton**

*14 ton (US)*



**GC-16** Weight c/w 1200 x 2800 jaws

**17 ton**

*18.7 ton (US)*

This brochure has been edited and distributed by SOILMEC Spa. The present document cancels and override any previous ones. This brochure shall not be distributed, reproduced or exhibited without SOILMEC Spa. authorization in accordance with to SOILMEC web site disclaimer condition.

SOILMEC Spa distributes machinery and structures all over the world, supported by SOILMEC Spa subsidiary companies and dealers. The complete Soilmec network list is available on the web site [www.soilmec.it](http://www.soilmec.it)

[www.soilmec.it](http://www.soilmec.it)

**soilmec**  
Drilling and Foundation Equipment